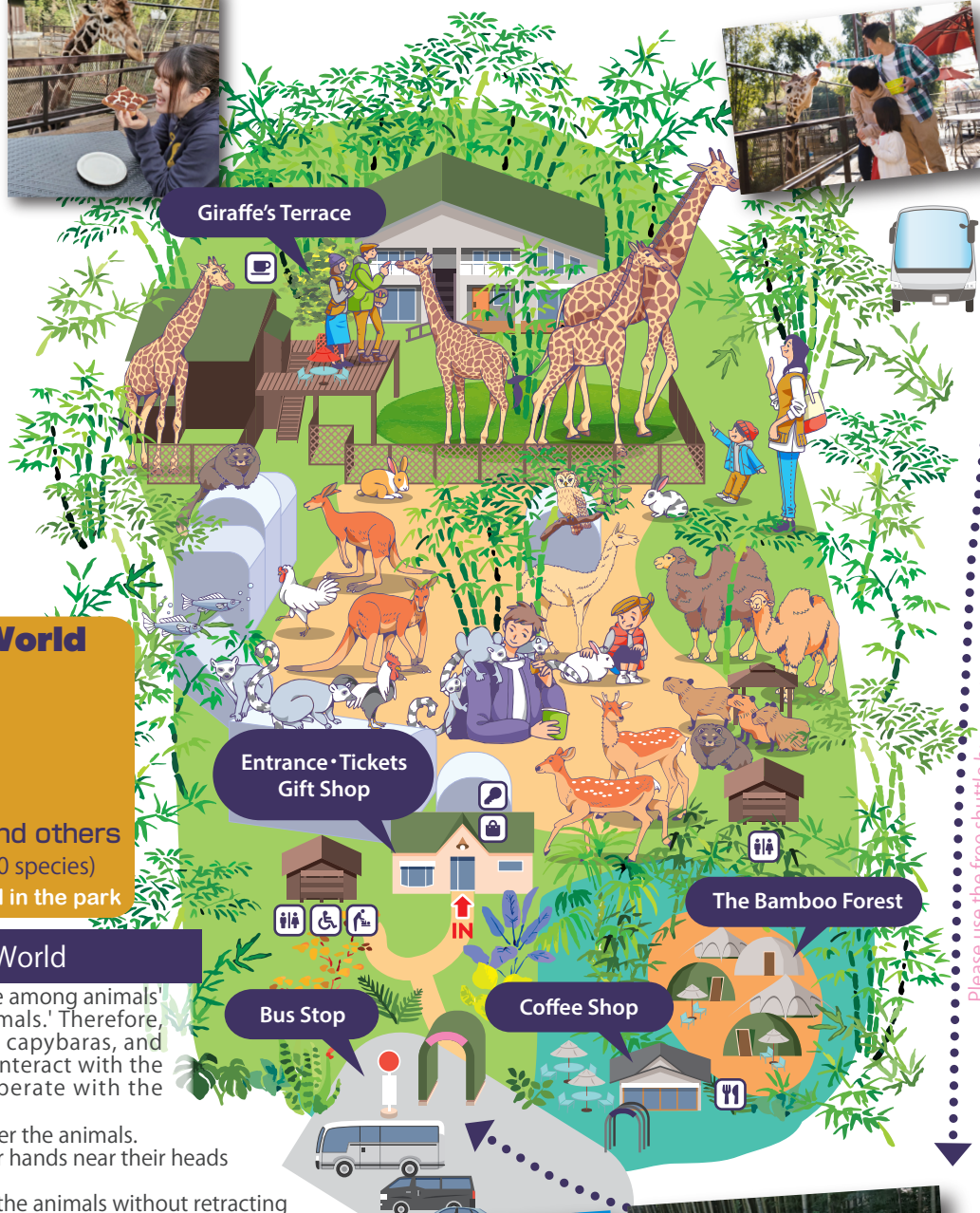




Giraffe's Marshmallow toast



SAYURI WORLD



Animals living in Sayuri World

- 🍷 Giraffe
 - 🍷 Guineafowl
 - 🍷 Camel
 - 🍷 Rabbit
 - 🍷 Binturong
 - 🍷 Peafowl
 - 🍷 Capybara
 - 🍷 Turkey
 - 🍷 Llama
 - 🍷 Chicken
 - 🍷 Ring-Tailed Lemur
 - ...and others
- (Approx. 30 species)
- ...you can feed them with the snacks sold in the park

Please read before entering Sayuri World

Our park focuses on the theme of 'coexistence among animals' and 'coexistence between humans and animals.' Therefore, various animals such as llamas, kangaroos, capybaras, and rabbits live freely in the central square. To interact with the animals in a friendly manner, please cooperate with the following guidelines:

1. Please do not shout loudly, run, or chase after the animals.
2. Do not touch or pick up animals, or put your hands near their heads or mouths.
3. When offering food, make sure to give it to the animals without retracting your hand.
4. Young children must be accompanied by an adult at all times.
5. When petting animals, gently stroke them from their neck.
6. Please do not touch the giraffes.
7. Engaging in dangerous activities or harassing animals may result in expulsion from the park at the discretion of the staff.
8. Do not feed the animals anything other than the food sold at the park.
9. Baby strollers are not allowed. Please store them in the designated area.
10. Please be mindful not to litter or drop garbage in the park.



Introducing the giraffes



Honey ♀

Born on August 2, 2010 at Utsunomiya Zoo. Hacchi and Setsuko's mother. She is a beautiful mother with a beautiful face.



Setsuko ♀

Born on February 3, 2023 in this park. Honey's fourth child. She was named "Setsuko" because she was born on Setsubun day.



Marisuke ♂

Born on August 13, 2022 at Saitama children's Zoo. He is Setsuko's husband.



Hacchi ♂

Born on July 8, 2016 in this park. Honey's first child. He is a boy who loves to eat.



An ♀

Born on May 26, 2019 in Tama Zoological Park. Hacchi's wife.



Jinny ♂

Born on October 10, 2024 in this park. Hacchi and An's first child.

Please use the free shuttle bus service between Ichihara Elephant Kingdom and Sayuri World. (On demand)